



### **Who Are We?**

- 6+ years Engineering Services and Solutions experience in Automation, Design Engineering (Electrical & Instrumentation), Plant IT and Software

### **Our Client Portfolio**

- Serving Global OEMs (Process, Discrete & Automation), EPCs, Solution Providers (SPs) and System Integrators (SIs)

### **Industry Spectrum**

- 10+ Industries- Food & Beverages, Railway, Pharmaceuticals & Chemicals, Energy & Power, Oil & Gas, Infrastructure & Utilities, Metals & Mining and Automotive & Machinery

### **Our Global Experience**

- Our engineers have an excellent track record and customer recognitions across the globe in Europe, America, Africa, Middle East & Asia Pacific

### **Our Strength**

- Multi-disciplinary & Multi-platform Engineers with Global experience
- An in-house multi purpose Pro-soft to manage all your projects



- **Production Line**

EIA-Solution provide engineering services. In order to handle to full package engineering + electrical panel supply, our short term plan is to open a production factory in Tunisia.

The business plan is already done and comfort us to target end of 2020 to have a factory ready for production.

The latest schedule is as follow:

- January 2020: Create EIA-Solution legal status in Tunisia
- July 2020: Raise fund. Objective 300K euros
- August 2020: Set location for the factory
- From August to December 2020: Hire and train the adequate staff.

First project can be handle as soon as the staff is ready to work.

- **Design Engineering**

The Design engineering, is performed by EIA-Solution/AZI-Concept France.

The new Tunisian Engineering team would be in charge of all electrical engineering.

- **EIA-Booster**

Our Pro-software will remain under EIA-Solution Ltd Hong Kong control



- **F**ocus on Customers: We aim customer's expectation at all times by consistently delivering quality service in a timely & efficient manner until full accomplishment.
- **O**wnership for Results: We are committed to achieve results in time, are dependable & go beyond the call of duty if required.
- **R**esponsibility towards People: We provide equal opportunities to people for growth & development. We build collaborative & congenial work environment for people to give their best.
- **C**ulture: We have the courage to accept challenges & give our best attempt to succeed.
- **E**thical: We ensure that all our actions reflect honesty, safety, transparency & integrity.

## Railway



### Control and command

- Power SCADA system

### ATS/Interlocking

- Signaling

### CMSS

- ICSS – FSCADA system

### UTILITIES

- Smoke extraction system
- Sump pump/Escalators/pwr

## Water Treatment



### Control and command

- Ultra Pure Water Loop  
Distribution

### Flow/Pressure control

### Quality management

- *Analytics and reporting*

## Production Industries



### Control and command

- Production control system

### Quality management

- *Analytics and reporting*

## Nuclear



### Control and command

- HVAC
- Sump pump/Escalators/  
LV distribution

## Oil & Gas



### Control and command

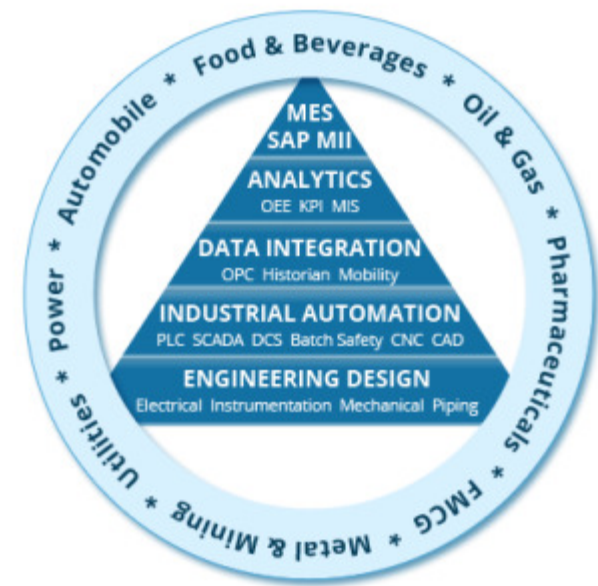
- Manifold counter fire  
system
- Oil distribution system
- Auxiliary Generator  
system

Industrial Automation - PLC, DCS, HMI/ SCADA, Safety system up to SIL3, Drives, CNC & Robotics, Automation Training

Plant IT - SAP MII, MES, MIS, BATCH, OEE, LIMS & Historians

Design Engineering - BIM, CAO/DAO, Electrical & Instrumentation

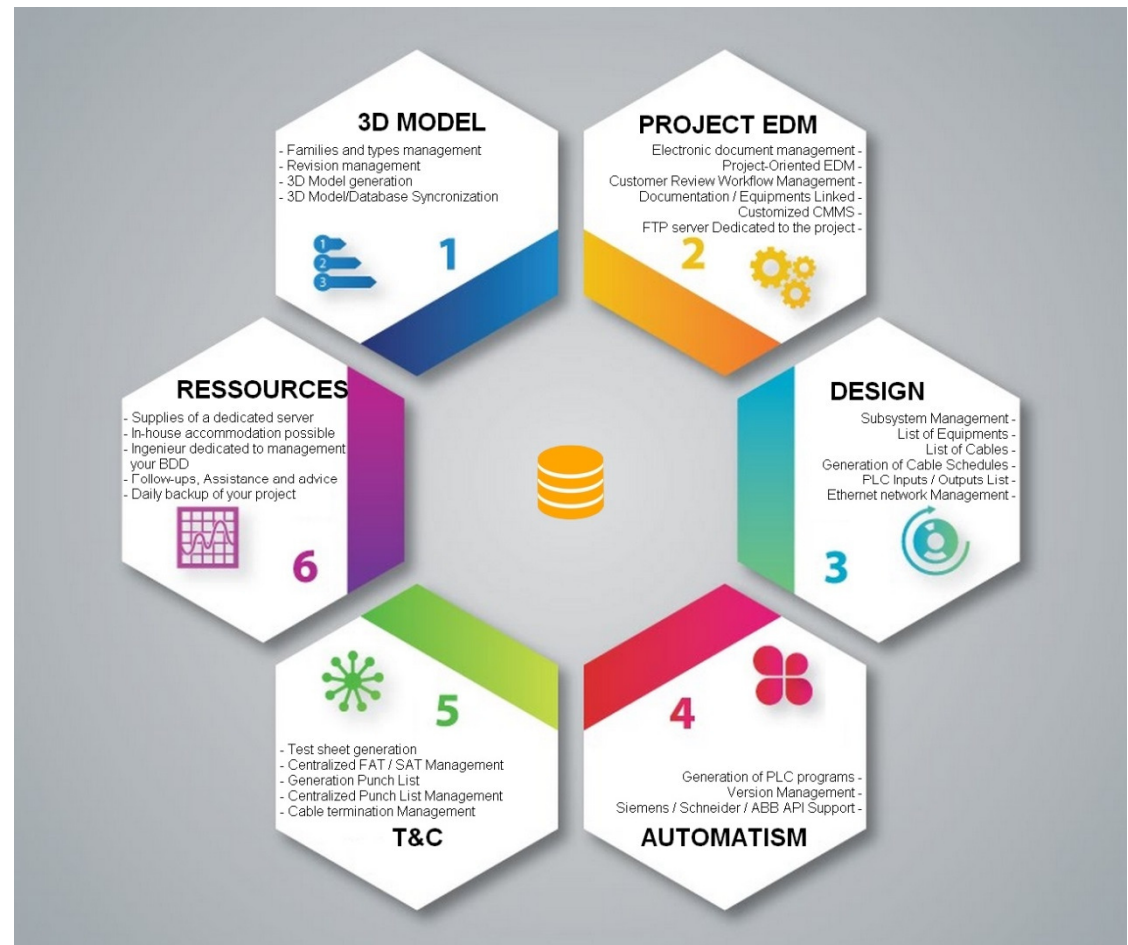
Pro-Software - Microsoft & Open Source Technologies, CAO/DAO, BIM. Own Pro-Soft EIA-Booster





Over the years, EIA-Solution head engineers have capitalized and centralized their skills and developed a solution for the realization of your projects.

Manage your projects in an intuitive and innovative way. EIA-Booster offers you different modular components according to the needs of your projects. Procurement, a project oriented Electronic Document Manager, Design manager, PLC configuration generator, Quality manager and configuration follow-up, Test and Commissioning Wizard and other components, you are offered and if necessary, tailored to your needs.







#### Industrial Automation Services

- PLC, SCADA & HMI
- DCS Engineering
- Safety systems & Drives Engineering
- CNC, Motion & Robotics Engineering
- Automation Audit and Gap Analysis
- Documentation & Specifications (FDS/ DDS)
- Pharmaceutical Validation Services
- Operator Training
- 24x7 Support



#### Plant IT Solutions

- Manufacturing Execution System (MES)
- MES Enablement and Industrial Connectivity
- Batch Engineering
- Genealogy & Tracking Solutions
- Management Information System (MIS)

### Services

- Detailed Engineering
- Drafting/ Modeling
- Migration/ Data Conversion
- Analysis/ Simulation

### Tools & Technologies

- Mechanical: AutoCAD, SOLIDWORKS, Revit, MicroStation
- Electrical & Instrumentation: EPLAN, AutoCAD

### Automation

- PLC: Siemens S7/PCS7, Schneider Electric Twido soft/Unity Pro, Rockwell RSLogix, Yokogawa system ...
- SCADA: Windows System Platform (Archestra, Intouch), WinCC+Flexible, PCVue, FactoryTalk View ...

### Industrial Network

- We handles most protocols and technologies like: Modbus RTU/TCP, Profisafe, IEC101-104...

## End-to-End Scope of Services & Solutions



## End-to-End Scope of Services & Solutions



### Engagement Types

#### Onsite Engineering

- Geographically Flexible Model
- Application Engineering
- Installation & Commissioning

#### Offsite Engineering

- Design & Development
- Testing
- Documentation

#### Hybrid Business Model

- Combines Onsite & Offsite
- Multi-disciplinary Engineering
- Optimize project cost



### Engagement Terms

#### Flexible

- Time & Material
- Fixed Cost Type
- Master Services Agreement (MSA) based on volumes

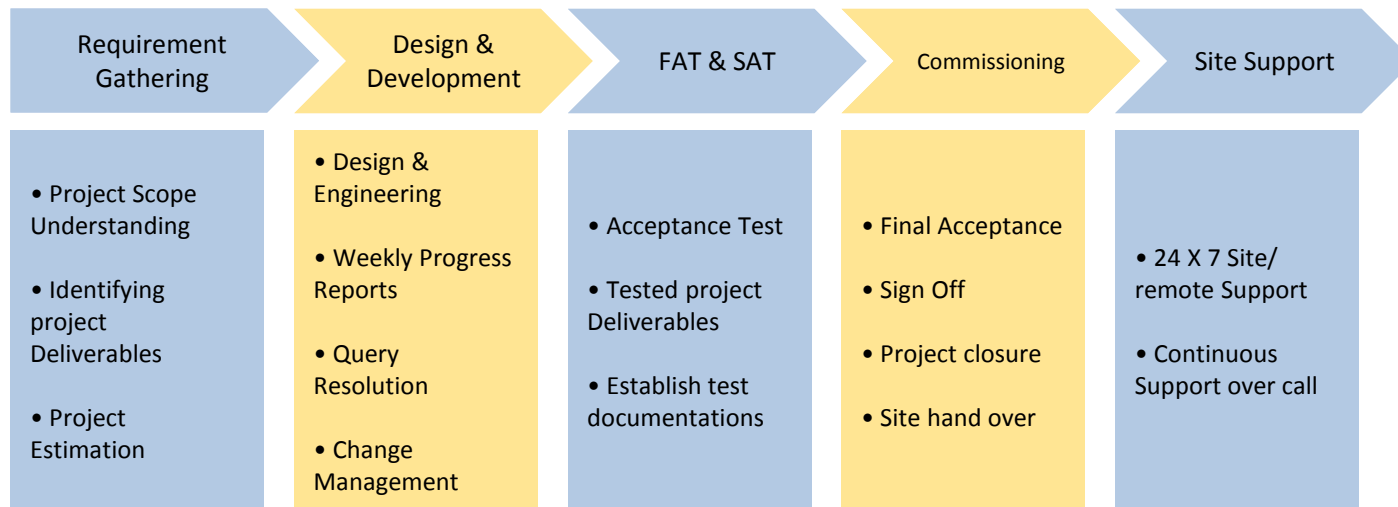
#### Scalable

- Few Man weeks
- Multi Man-Year
- Contractual agreements based on project requirements

#### Agile

- End-to-end engagement from pre-bid to post-commissioning
- Introduction in running project
- Engagement at any stage of the project

# End-to-End Scope of Services & Solutions





## Global Project References

## Project References

End Customer	Our Customer	Project Location	Project Description	Tools/Technology
Saint-Gobin	Saint-Gobin	France – Pont a mousson	Automation System Revamp/Upgrade	Schneider Electric, AutoCad, EIA-Booster
CGN (China General Nuclear)	Areva	Chine – Taishan	Manage Systems Automation and instrumentation interfaces	Schneider, Siemens. Various instruments. AutoCad, Eplan, EIA-Booster
MRT Corp.	Colas Rail Asia	Kuala Lumpur - Malaisie	Manage and develop the full automation of the Power Supply and Distribution System for the MRT2 Line + T&C	Siemens PCS7, WinCC Flexible, Wonderware System Platform, EIA-Booster, RuggedCom Ethernet Switch
MRT Corp.	Colas Rail	Cergy Pontoise - France	Prepare the engineering documentation (specifications, plans, procedures ...) related to the automation of the Power SCADA for the MRT2 Line	Siemens PCS7
Global Foundries	Ovivo	Malta – NY – USA	Creation of a Highly Purified Water loop distribution	Rockwell RSLogix + FactoryTalk View





[www.eia-solution.com](http://www.eia-solution.com)  
[www.azi-concept.com](http://www.azi-concept.com)



<https://www.linkedin.com/company/eia-solution>



<https://twitter.com/eia-solution>



<https://www.facebook.com/Eiasolution>

## CONTACT US



### EIA-Solution SAS

43 Avenue Paul Santy  
69008 Lyon  
+33(0)6 48 28 42 13

### AZI-Concept SAS

4 Allée de la Hardt, 68440  
Schlierbach  
+33(0)3 89 39 00 74  
+33(0)6 78 54 29 92



### EIA-Solution Ltd

Company No. 2571957  
ROOM 747, 7/F, STAR HOUSE,  
TSIM SHA TSUI, HONGKONG  
+60(0)12 424 3040  
+33(0)6 48 28 42 13

### Email

- [Contact@eia-solution.com](mailto:Contact@eia-solution.com)
- [Walid.Megdiche@eia-solution.com](mailto:Walid.Megdiche@eia-solution.com)
- [Adama.Zida@eia-solution.com](mailto:Adama.Zida@eia-solution.com)